

## **Historic, Archive Document**

Do not assume content reflects current scientific knowledge, policies, or practices.



6257

LIBRARY  
U.S. DEPARTMENT OF AGRICULTURE

# DONDERO'S

111

1932

## VEGETABLE AND BERRY PLANT PRICE LIST

Vegetable  
Seed Trials



## L. and F. DONDERO

Vineland, New Jersey

Vegetable Seed Trials

FEB 20 1932

# Please Read This Page Carefully

## Help Us to Serve You Right

**HOW TO ORDER.** You should order just as soon as you receive this catalog. By so doing, you get your order booked in time before the rush of the season and get just what you want. Don't wait and be disappointed. You may add to your order later if you wish. Write name and address plainly and state how goods should be sent. When this is not done will use the best of our knowledge.

**OUR TERMS.** Cash with order. C. O. D. shipment will be made only when one-fourth amount is sent in with order. Kindly remit by Postal Money Order, Registered Letter, Express Money Order or Personal Check. Please do not ask us to open accounts for less than \$10.00 orders.

Packing is executed with utmost care. Special pains are taken to pack lightly, thereby reducing the expense of transportation to a minimum. There is no extra charge for packing.

**GUARANTEE**—We warrant our plants and seeds true to name, with the explicit understanding that should any prove otherwise, we will upon satisfactory proof, return the money paid or replace it with other stock; but we are not liable for damage beyond this. A sure indication of the purity of our stock and our way of doing business is the fact that customers of former years continue to deal with us.

**YOU WILL** find the prices in this catalog much lower than others, for the kind of stock we are offering. A trial order will convince you that our plants are as good as can be purchased anywhere, regardless of cost.

**CLAIMS**, if any, must be made upon receipt of goods, when they will be carefully and cheerfully examined, and, if just, all will be made satisfactory. Claims made after five days from receipt of goods will not be entertained.

### OUR CATALOG INCLUDES THE FOLLOWING:

|                         | Page  |                           | Page  |
|-------------------------|-------|---------------------------|-------|
| Asparagus roots         | 4-5   | Grape Vines               | 20    |
| Blackberry plants       | 7     | Horseradish roots         | 23    |
| Brussels Sprouts plants | 16    | Pepper plants             | 16    |
| Cabbage plants          | 17    | Raspberry plants          | 8-9   |
| Cauliflower plants      | 16    | Rhubarb roots             | 23    |
| Dahlits                 | 18-19 | Strawberry plants         | 10-12 |
| Dewberry, tip plants    | 6     | Sweet Potato, Seeds, Etc. | 13    |
| Egg Plant plants        | 17    | Tomato plants             | 17    |

(Use order blank, last page)

**REFERENCES:** First National Bank, Vineland, N. J.; Tradesmens bank, Vineland, N. J.; Vineland Post Office.

## GREETINGS

In issuing our Price-list for 1932, our first thought was to thank our many friends and customers for the confidence and patronage tendered our place during the past six years we have been in business. We have during 1931 enjoyed the largest volume of business we ever had, which only goes to show that in spite of hard times, people will still buy when they are actually getting their moneys worth. True description of our stock and unbeatable service is being appreciated more each year by our many old and new customers.

Our next thought was to again lower all prices wherever possible and pass the saving on to the customer. No elaborate catalog or anything unnecessary in anyway. Retaining of course the same high-class and fully GUARANTEED stock as in former years.

A True explanation in each case so that our customers may know exactly what they are getting and we will continue our motto, "A Satisfied Customer or His Money Back".

NOTICE: Our liberal prepaid rates. Our Free Dahlia roots page 17-

Sincerely yours,

L. & F. DONDERO

STATE OF NEW JERSEY  
THE DEPARTMENT OF AGRICULTURE  
Bureau of Statistics and Inspection

No. 358

Trenton, N. J., September 1st, 1931.

THIS IS TO CERTIFY That we have this 14th day of Aug. 1931, in accordance with the provisions of Chapter 268 Laws of 1916, State of New Jersey, inspected or caused to be inspected by a duly appointed Inspector the GENERAL Nursery Stock growing in the **L. and F. Dondero Nursery** of **L. and F. Dondero**, proprietors, at Vineland in Cumberland County, New Jersey, and have found the same apparently free from San Jose Scale and other dangerously injurious insect pests and dangerously destructive plant diseases.

This Certificate expires Sept. 1, 1932, and covers only stock actually in the nurseries when examined.

(Signed) THOMAS J. HEADLEE,

State Entomologist.

WM. H. MARTIN, State Plant Pathologist.

RALPH B. LOTT, Chief Insp.

If you have no use for this catalog, will you please give it to a friend or neighbor. Thank you.

# ASPARAGUS ROOTS

## THE MARY WASHINGTON

### *Rust-resistance and giant-size stalks*

This asparagus, which has been selected by the United State Department of Agriculture, Washington, D. C., has proven itself the leading Asparagus known. It is practically rust free. The plants form large clean shoots which are long, straight, thick and heavy, with closely folded tips. The color is rich dark green tinted darker at the tips. It is a heavy yielder and a long-lived producer of exceptionally fine flavor. The fact that the mother plant has been tried for over 15 years in trial grounds of the Department of Agriculture, is ample proof of the hardiness and longevity of this variety.

We may also add at this point that we can now definitely state that green asparagus is bringing a higher price on the general markets than white, and the fact that the Mary Washington produces a very large, dark green, tight tip shoot which will not prematurely sprangel out is greatly in its favor in the production of what is now desired.

All the roots we offer are grown by us from first class seed (guaranteed true to name) under favorable conditions in rich soil. Placing us in a position to cover requirements of the most critical

planter.

Roots are ordinarily shipped during March and April. Orders should be placed as soon as possible. At the following prices every family should have its own Asparagus bed.

| PRICES: (Postpaid—300 or less) | 50     | 100    | 200    | 300    | 1000    |
|--------------------------------|--------|--------|--------|--------|---------|
| 1 year old, No. 1 roots        | \$ .60 | \$ .85 | \$1.55 | \$2.25 | \$ 5.35 |
| 2 year old, No. 2, medium size | .60    | .85    | 1.55   | 2.25   | 5.35    |
| 2 year old, No. 1, first grade | .85    | 1.45   | 2.45   | 3.40   | 8.75    |
| 3 year old, extra heavy        | 1.35   | 2.15   | 3.85   | 5.35   | 12.25   |

500 and over sold at 1000 rate, shipped as directed, charges collect.

For proper culture see opposite page.

Altho the above prices may seem too low to some customers, we guarantee to send you the variety and size as ordered. Growing Asparagus roots for 5 of the largest seed houses in the East and selling upward of 200,000 annually is reason enough for our low prices. Write for special prices on quantity lots, stating how many you can use.



# The Washington

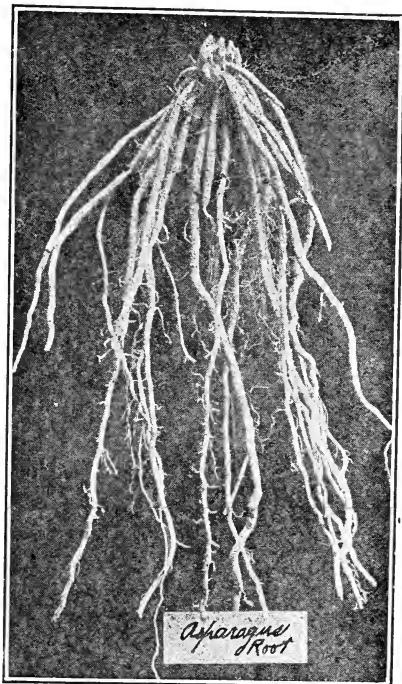
*Another good variety*

In short the Washington is exceptionally rust-resistant due to unusually vigorous constitution (secured by critical selection extending over ten years); extraordinary yielding qualities; large size, of individual stalks and their rapid development to cutting size, which rapid growth stands for tenderness. The shoots are straight, of dark green color, with a heavy purple overtone. They do not open until well above the ground.

**PRICES:** Bottom of page.

**PALMETTO (True)** — Bears stalks of large size, is of early maturity, and a heavy yield. A very reliable variety that is comparatively free from rust and blight.

**PRICES:** Bottom of page.



**CULTURE:** Select good loamy soil that is well drained. Plow out rows 4 feet apart going down about 7 inches. Put quantity of stable manure down first then cover a little with top soil. Place the roots down with crown up spreading the roots out carefully about 18 inches (for small garden) or 24 inches for field planting. Cover to a depth of about 2 inches and as they grow through, gradually increase to 6 inches. DO NOT use commercial fertilizer or bird manure down on the roots. Either of these can be used on top of the ground when roots are covered over five inches.

At the above rate 100 plants require a plot about 12 x 40. It takes about 5000 roots to plant an acre.

| PRICES: On Guaranteed Fresh-dug root | 50     | 100    | 200     | 300     | 1000    |
|--------------------------------------|--------|--------|---------|---------|---------|
| 1 year, No. 1                        | \$ .50 | \$ .75 | \$ 1.40 | \$ 2.05 | \$ 4.90 |
| 2 year, medium size                  | .50    | .75    | 1.40    | 2.05    | 4.90    |
| 2 year, first grade                  | .70    | 1.15   | 2.10    | 1.95    | 6.85    |
| 3 year, extra heavy                  | 1.15   | 1.95   | 3.45    | 4.85    | 10.75   |

500 and over sold at 1000 rate, shipped as directed, charges collect.

# BEST KNOWN DEWBERRY



**THE LUCRETIA**—This is the standard and best dewberry. Extremely hardy and very productive. It ripens in advance of the earliest blackberry and equals in size the best varieties of its near relative. The vines are of slender trailing habit, and succeed upon all soils (even very sandy) and produce a sparkling jet black, large berry of high quality and very firm. Ships well, keeps well, and sells well at a road stand or any market.

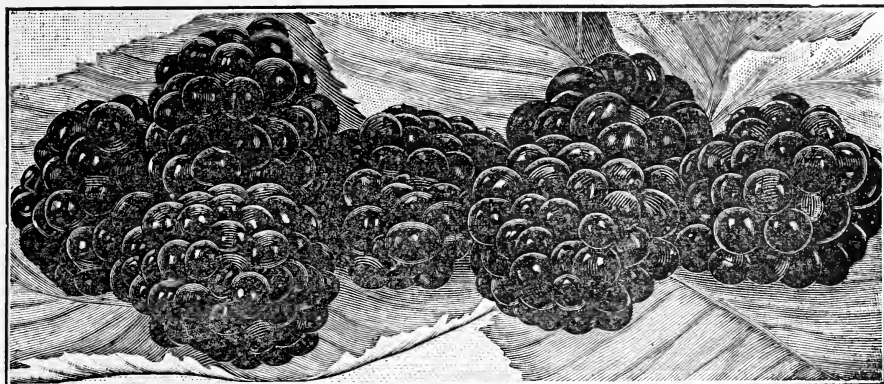
If to be staked, plant in rows four feet apart each way; if to be mulched, plant in rows six feet apart and the plants three feet apart in the rows. Good strong tip plants. Guaranteed to live and give satisfaction.

**Price each 10c; 12 for 45c; 50 for \$1.00; 100 for \$1.95; POSTPAID.  
300 and over at \$1.15 per 100, sent as directed, charges collect.**

Write for special prices in large lots.



## BLACKBERRIES



We grow and recommend the following varieties of Blackberry plants, because they are the best. There is no need of looking further. You can read of **New** varieties and of **Great** varieties, but either of the three mentioned below will stand alongside of the most elaborately advertised. These plants should be planted 6 feet apart each way and grown in hills. This makes them give you the biggest crop of the biggest berries with the least hand work. It takes 1200 plants per acre, at the above rate. If you wish you may plant them 5 x 5, this requires 1750 plants per acre. However, we believe the former will be most satisfactory to you.

**ALFRED**—Posses the quadruple valuable qualities of large size, productiveness and absolute hardiness together with a prolonged season of fruiting. Just the thing for the gardener who has a Roadside stand. On fertile soil the canes have often come ten to twelve feet high. Fruit is large, attractive and sweet.

**ELDORADO**—If you are looking for a time-proven, profitable and dependable Blackberry you will not be disappointed in the Eldorado, with its jet black extra fine berries that have long been considered exceptional for home use and known for their very few seeds. Due to the supreme health and vigor of Eldorado it requires no winter protection in even the coldest climates. In all, the finest quality of the very fine Blackberry plants we are offering.

**MERSEREAU**—A very fine berry. Used extensively as a substitute by many farmers for the old Wilson. Fruit is large glossy and firm, standing shipping very well. Has great productiveness and unusual freedom from orange rust.

**RUSSELL**—(Or more commonly known as the **BEST OF ALL**) Surely is the Best Of All when it comes to size firmness and color. Will always bring more money in the Market. Has great productiveness quality and unusual freedom from orange rust. (An important fact.)

| PRICES: Postpaid—200 or less | 12    | 50     | 100    | 200    | 1000    |
|------------------------------|-------|--------|--------|--------|---------|
| Alfred, No. 1                | \$.70 | \$1.75 | \$2.95 | \$4.95 | \$16.75 |
| Eldorado, No. 1              | .50   | 1.55   | 2.65   | 4.45   | 15.25   |
| Russell, Best of All         | .85   | 1.95   | 3.15   | 5.85   | 19.25   |

300 and over sold at 1000 rate, shipped as directed, charges collect.

## DONDERO'S SUPER QUALITY RASPBERRY PLANTS



We offer only fresh-dug plants. No cold storage plants that were dug last fall or during the winter are shipped to our customers. All our plants have passed State Inspection and when necessary have been inspected twice. Another point is our plants are dug very carefully not to break the roots and we guarantee satisfaction when given ordinary care. One setting is good for several years.

**CULTURE**—Plant the red or upright growing varieties in rows six feet apart and plants three feet apart in the rows, requiring 2420 plants per acre. In small garden, plant four feet apart each way and restrict to hill, permitting but three or four canes to remain in each hill. For field culture, the black cap varieties should be planted in rows seven feet apart and plants three feet apart down the row. Sucker plants should be trimmed back to within three inches of the ground three weeks after planting.

**LATHAM**—Introducing our own Special Strain of the Greatest Red Raspberry known. Latham has proven itself to be not only the most popular and profitable Red Raspberry of today, but of all time. The Fruit is beautiful, commanding attention whether on the bush or on the market. Latham QUALITY is superb in everyway. Fruit being firm makes it a wonderful canner as well as exceptional for marketing and shipping. (Holds up well on your Road Stand). You will surely be well satisfied if you plant our heavy rooted, Mosaic-free, GUARANTEED stock now as you will have a good crop of these wonderful berries next Spring.

Latham has proved itself in most localities and on practically any soil. It starts bearing early in June and brings forth an exceptionally heavy crop of these large berries until Fall.

**Pleasure and Profit** are assured if you will plant our vigorous plants, as nothing else can be desired in a Red Raspberry than what is found in the LATHAM that you are offered here.

**CUTHBERT**—The best Red Raspberry for commercial purpose. A variety that can be depended upon for a good crop of fine fruit in practically all sections of the country. For hardy, vigorous bushes plant in a sandy loam. Berries retain their brightness long after being picked. A wonderful berry for long distance shipping. **PRICES: Bottom page.**

**ST. REGIS**—(Most popular red everbearing) Not only raspberries, but berries of the very highest grade—in size, in brilliant crimson color, in firmness and flavor. Ripens with the earliest and continues on young canes until autumn, starting to produce about 80 days after planting. It succeeds on all soils, light or heavy. Canes absolutely hardy, producing large quantities of delicious fruit. The most widely planted variety for the market garden.

## Two Leading Black Cap Varieties

**CUMBERLAND**—Produces large jet black fruit, firm, and of excellent quality; sweet and ripening in mid-season and continuing for two weeks. Stands long shipments well. Bush healthy and vigorous.

**PLUM FARMER**—Is considered by most growers to be the best early black cap variety. Strong, vigorous, upright grower, producing the largest of all Black Raspberries. Good for both home and market.

**GUARANTEED** first-class, true-to-name and to reach you in good condition at the following prices: **WHY PAY MORE?**

Well rooted sucker plants except where noted.

|                        | We pay postage |     |        |        |        | Collect |
|------------------------|----------------|-----|--------|--------|--------|---------|
|                        | each           | 12  | 50     | 100    | 200    | 1000    |
| Plum Farmer (red)      | 10c            | 45c | \$1.10 | \$1.95 | \$2.85 | \$15.25 |
| Cuthbert (red)         | 12             | 55  | 1.45   | 2.35   | 4.15   | 15.75   |
| St. Regis (red)        | 14             | 60  | 1.55   | 2.85   | 4.90   | 16.25   |
| LATHAM (red)           | 16             | 95  | 2.15   | 3.95   | 6.65   | 23.75   |
| Cumberland (black cap) | 15             | 65  | 1.65   | 3.10   | 5.90   | 18.75   |

500 and over sold at 1000 rate, shipped as directed, charges collect.

When ordering from us—remember you are buying only Fresh-Dug, True to name plants that are Fully GUARANTEED. When comparing PRICES—notice we pay Postage on small lots. This is quite a saving to the customer.

We sell the above listed plants in any amount up to 50,000 of a variety. Write us for special prices on quantity lot, stating amount you can use.

# STRAWBERRIES

**BIG JOE**—(Perfect) This is a splendid variety that is being extensively grown in this country, and in our judgement it is second to none, all points considered. It has been grown in this section several years, each year netting as much or more money per acre than any other variety grown for commercial purposes. It is wonderfully productive of extra large good quality berries that bring top prices in market. It is a larger berry than the Chesapeake, ripens a few days earlier and has as fine appearance as any strawberry that we have ever seen. It is uniform, well colored and firm enough for distant shipment. The plants are strong growers and good plant maker with luxuriant light green foliage. You can make no mistake by including the Big Joe in your order.

**LUPTON**—(Perfect) The best late variety. Plants are healthy strong growers, making enough plants for a good fruiting row. Foliage dark green. Very productive of beautiful brilliant red berries that resemble Chesapeake in shape. Ripens perfect and excellent shipper.

**CAMPBELLS EARLY**—(Perfect) Its foliage is large and of a beautiful dark green. In the production of fruit and plants it is a marvel. Its berries are large and beautifully formed. Color a deep glossy red, a trifle lighter than others. The meat is solid and rich. The berries are excellent shippers and splendid keepers. The calyx is a bright green, seeds yellow. This is a strong bisexual variety and has a long blooming season.

**KELLOGG'S PRIZE**—(Imp.) This is a pistilate variety and ripens late. Very productive of high quality bright glossy red berries, with yellow seeds, slightly imbedded, which makes a beautiful appearance when packed for market. Plant Kellogg's Prize with Big Joe and you will have a winner.

**PREMIER or HOWARD 17**—(Perfect) In our judgement this is the most perfect early variety to date. In fact, it is in a class by itself, having all the desirable qualities necessary to constitute an ideal extra early variety. Thrives on practically all soils. Has dark green foliage coming to a medium height and shows no sign of disease. Berries are large, beautiful deep red, with all the quality one would desire in strawberries. Too much cannot be said of this wonderful berry. The leading and best known of the early varieties. A great money maker for the market gardener or the man with a road stand.

# MASTODON

THE WONDERFUL NEW EVERBEARING STRAWBERRY



This great strawberry found in Indiana a few years ago, has stood tests in practically every section of the United States the last couple of seasons. It is now widely distributed and favorable reports come from experiment stations in various states where the berry has been tried.

The fruit is almost double in size of the ordinary everbearers. Produces a heavy crop in the spring and another in late summer and early fall. Will produce a good crop this fall if planted in early spring.

It is truly the largest, most delicious and heaviest yielding of all everbearing sorts. It outyields some of the finest June bearing sorts during their season and continues to bear, throughout summer and fall, berries of amazing size and surpassing quality. For best results (though this is not essential), plants should be disbudded up to July 1st. They will then bear banner crops beginning early in August and continue to produce heavy crops of delicious berries right up until severe freezing weather.

Assure yourself of Tue-to-name, vigorous plants that will actually give you a good profit the first year by getting our **Guaranteed Stock** which absolutely cannot be beat. Can book orders up to 50,000 of this variety. Write for special prices on a quantity lot informing us how many you can use. -

**PRICES:** Following page. Write for special prices on large lots, stating amount you can use.

## Strawberry Culture and Price List

For hill culture, rows should be either 24, 30 or 36 inches, and plants set 12 inches apart down the row.

For matted row system rows should be either 42 or 48 inches and plants set 18 to 24 inches in row.

An important point when planting Strawberry plants is to get your plants in the ground the same depth as they grew in the original bed, and to pack the dirt firmly around the roots. We have found the two following methods most practical. If plants are to be set with two-horse transplanter, we use light marker attached to transplanter, setting the plants level with the surface, within a few days after planting we sow fertilizer down the rows at the rate of 400 lbs. per acre, following with the cultivator, being very careful not to disturb the roots of the plants, also not to cover up the crowns or heart of the plants. If plants are to be set with trawl, we use a one-horse plow to make a furrow, sow fertilizer down the furrow at the rate of 400 lbs. per acre, make a sharp list with one-horse plow, then strike list down nearly level with the field with light drag, or board. Drag and set plants immediately.

We strongly advise very early spring planting, as plants set early get a good start before the hot, dry weather strikes them and are much more apt to grow and make a good fruiting row than those set late in the season.

| PRICES: (Postpaid, 200 or less) | 25  | 50    | 100   | 200    | 1000   |
|---------------------------------|-----|-------|-------|--------|--------|
| Premier (early)                 | 45c | \$.65 | \$.95 | \$1.60 | \$4.75 |
| Campbells (early)               | 40  | .60   | .90   | 1.55   | 4.75   |
| Lupton (late)                   | 45  | .65   | .95   | 1.65   | 4.95   |
| Big Joe (late)                  | 40  | .60   | .90   | 1.55   | 4.75   |
| MASTODON (Everbearing)          | 65  | 1.00  | 1.65  | 3.45   | 8.00   |

500 and over sold at 1000 rate, shipped as directed, charges collect.

|   |  |               |
|---|--|---------------|
| An exceptional Garden Collection, No. 15  |  |               |
| 50 Russell or Best of All Blackberry      |  | \$1.95        |
| 100 Mastodon Worlds greatest Strawberry   |  | 1.65          |
| 50 LATHAM red Raspberry. Our best variety |  | 2.25          |
| Good value at                             |  | <u>\$6.15</u> |
| <b>Special Price \$4.75</b>               |  |               |

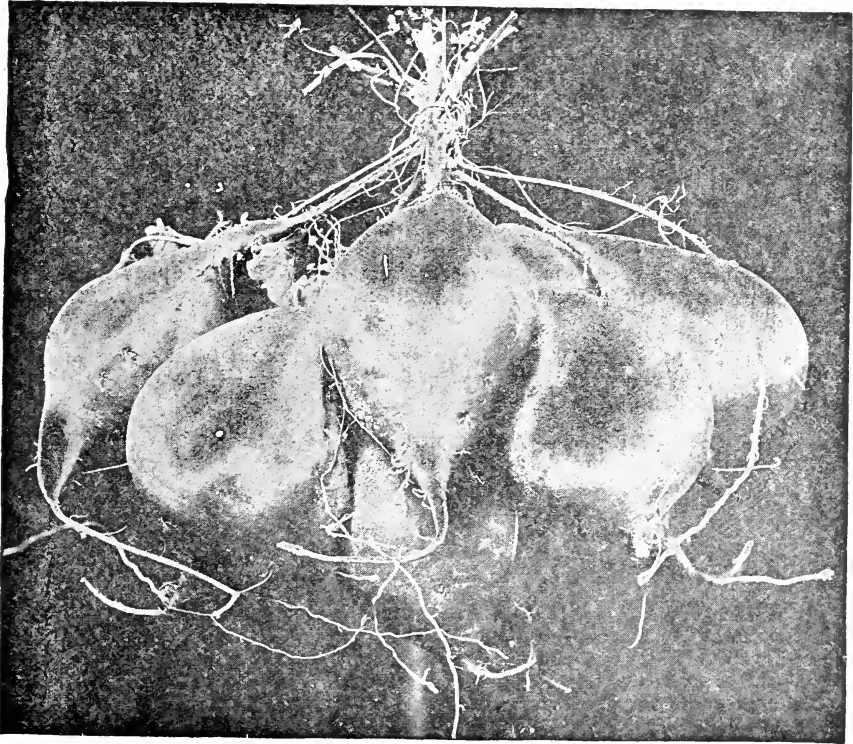
(Other Collections are listed on Page 21)

WE GUARANTEE All our plants, roots and vines to be true to name, healthy and reach you in first class condition. They **must** grow if you plant immediately upon arrival and water a little if necessary. If they don't we will on satisfactory proof refill your order, **free of charge**.

## Seed Sweet Potatoes

And when we say "SEED" Sweet Potatoes, that is what we mean. Not just Sweet Potatoes sold for Seed Purposes. Ours are selected, Disease-free potatoes just as we plant in our own beds for our own plants. Stock that has been constantly improved for the past 18 years. Guaranteed to produce extra fine plants if properly bedded. (However, we do not suggest you make your own bed the first season. You will have better results by getting our No. 1 plants until you get a practical idea about raising them). But if you have grown Sweet Potatoes before, try our stock this season and be convinced that you never thought you could do so well. Our potatoes are not the long Cork-Screw type which you have probably had before; but the true Jersey Yellow type as is pictured below. The kind that when cooked are dry, mealy and deliciously flavored. Not soggy and tasteless.

(See next page for prices and plant culture)



OUR LEADER (THE JERSEY YELLOW)

# Sweet Potatoes

Continued

**PLANT** Plants should not be set until the soil becomes warm and **CULTURE** weather mild. We find they they do best if set in a sandy loam, altho they do well on quite heavy soil also. Set plants in either hills or on ridges about six inches in height, the rows being about three feet apart and plants eighteen inches apart down the row. After preparing the ground and marking out the rows put a small handful of fertilizer (rich in potash) and well mixed in each hill. Of course, a small shovelful of compost or manure will answer the purpose just as well. If, while setting the plants the soil is dry, always be sure to put a little water in the hole with the plant, this insures it getting a good start.

**DIGGING** Dig in dry weather if possible, and allow to dry several hours **STORING** in field. Put immediately in storage if to be kept over winter. Moving afterwards even from place to place in the same room will sometimes cause them to rot. A dry cellar with a stove or heater, where the temperature can be kept about 50 to 60 degrees F and air dry is one of the best places to keep sweet potatoes, although for large quantities store-houses are often built above ground. It is usual to leave an air space of four inches or more under the bins or boxes in which they are stored.

## Varieties

**THE JERSEY YELLOW**—This seems to be the preferred name for the Sweet Potato grown mainly in New Jersey. Our Vineland fancy strain has for years been carefully selected from the best Jersey Yellow seed, having a smooth skin, good form, color and general appearance as well as productiveness and keeping qualities. Good, dry and mealy when cooked.

**BIG STEM JERSEY**—Another very good variety. A very rapid growing and heavy yielder of the Jersey Yellow type. Deliciously flavored and excellent for baking.

**THE JERSEY REDS**—A fine potato. The best of all Sweet Potatoes for table use, also good for the market grower. Is a heavy yielder of well shaped potatoes of a very attractive color and delicate flavor.

For prices see opposite page.

We advise the small grower to buy plants instead of tubers.

We sell Seed Sweet Potatoes and plants in large quantities.

Write us for special prices, stating amount you can use.

**YAMS (White or Red)** This potato is most commonly grown in the South, but it has proven very satisfactory in this locality and also further north. The tuber comes much larger than the ordinary Sweet Potato, and matures much earlier, (an important factor to the Gardener wanting Sweets for the early market or Roadstand.

Keep over the winter months as good as the ordinary Sweet Potato. Cooks up sweet and juicy.



## Prices on No. 1 Seed Sweet Potatoes

|                     | Peck | Bushel | 5 Bushels | 10 Bushels |
|---------------------|------|--------|-----------|------------|
| Jersey Yellow       | 85c  | \$1.85 | \$8.95    | \$17.50    |
| Big Stem Jersey     | 75   | 1.75   | 8.50      | 16.75      |
| Jersey Reds         | 90   | 1.90   | 9.10      | 18.25      |
| YAMS—Yelooow or Red | 90   | 1.90   | 9.10      | 18.25      |

Will be shipped by Mail or Express, charges collect. State how

Have a few special selected seed sweets in the Jersey Yellow at the following prices: (This is from split-tem stock). **Peck \$1.25; Bushel \$2.75;** This stock must be seen to be appreciated.

### PRICES ON FIRST-CLASS PLANTS (Sprouts.) We pay postage.

|                 | 50  | 100 | 200    | 500    | 1000   |
|-----------------|-----|-----|--------|--------|--------|
| Jersey Yellow   | 45c | 80c | \$1.15 | \$1.95 | \$3.10 |
| Big Stem Jersey | 40  | 75  | 1.10   | 1.85   | 3.00   |
| Jersey Reds     | 50  | 85  | 1.25   | 2.00   | 3.25   |
| Yams            | 50  | 90  | 1.45   | 2.15   | 3.75   |

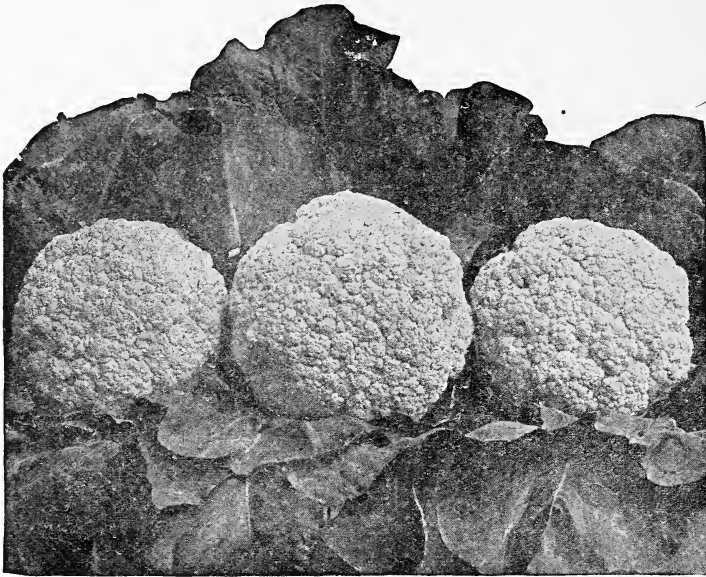
See Free Dahlia offer page 18. Write us for Special quantity prices.

### A SPECIAL INTRODUCTORY OFFER

|                                 |        |                              |
|---------------------------------|--------|------------------------------|
| 100 Jersey Yellow, No. 1 plants | .80    |                              |
| 100 Jersey Reds, No. 1 plants   | .85    |                              |
| 50 Yam plants                   | .50    | Will be sent to your address |
| 1 Jerseys Beauty, Dahlia        | .50    | Postpaid upon receipt of     |
|                                 |        | <b>\$2.25.</b>               |
| Total value                     | \$2.65 |                              |

## Some Special Home Collections

| Collection No. 10                     |                | Collection No. 12               |                |
|---------------------------------------|----------------|---------------------------------|----------------|
| 1 Yew Gem                             | .35            | 1 Avalon                        | .50            |
| 1 Jersey Beauty                       | .50            | 1 Jersey Beauty                 | .50            |
| 1 Bronze Beauty                       | .25            | 1 Yellow Gem                    | .35            |
| 1 Avalon                              | .50            | 1 Emma Marie                    | .75            |
| Value                                 | \$1.60         | Value                           | \$2.10         |
| Will be sent Postpaid upon receipt of | <b>\$1.00.</b> | Will be mailed you Postpaid for | <b>\$1.50.</b> |
| Collection No. 13                     |                | Collection No. 14               |                |
| 6 Niagara Grapes 2 yr.                | 1.25           | 12 St. Regis Raspberry          | .60            |
| 100 Premier Strawberry                | .95            | 12 Rhubarb roots, 2 yr.         | .85            |
| 25 MASTODON Strawberry                | .75            | 25 MASTODON Strawberry          | .75            |
| 12 St. Regis Raspberry                | .60            | 2 Jersey's Beauty Dahlia        | 1.00           |
| 12 LATHAM red Raspberry               | .95            | Value                           | \$3.20         |
| Value                                 | \$4.50         | A Real Buy for                  | <b>\$2.25.</b> |
| Special Price                         | <b>\$3.25.</b> |                                 |                |



### THE SNOWBALL CAULIFLOWER

April 15th to Aug. 12th

**SNOWBALL**—This is the most popular of all cauliflower. One of the best for home or market gardeners. Snowball Cauliflower can be planted for early or late and it will make a fine large head. Another advantage of planting Snowball Cauliflower is that the plants can be set closer in the row than other varieties. Early field grown plants ready about May 1st. Late field grown plants ready about July 1st. **PRICES: dozen, 20c; 100, \$1.00; 500, \$4.00, postpaid. \$7.00 per 1000, collect.**

**NEW CENTURY CAULIFLOWER**—New Century Cauliflower is about the same size as Snowball, and it has a fine flavor and is a very good keeper. **PRICES:— Same as Snowball.** Field grown plants ready May 25th.

### BRUSSELS SPROUT PLANTS

**BRUSSELS SPROUTS**—Small heads or knobs along the stem. They are better than cabbage, may be boiled like cabbage or cooked like cauliflower. Ready for use in 125 days from time you set out the plants. Be sure to try them. **PRICES: Same as cauliflower.**

### PEPPER PLANTS

**BULL NOSE or CHINESE GIANTS**—Both are very good large sweet Peppers. Flesh is thick and meaty. Immensely productive varieties, they sell well in the market and are fine for home use. **PRICES: Dozen 25c; 100, 90c; 500, \$3.00, postpaid; 1000, \$4.25, shipped as directed, collect.**

## TOMATO PLANTS

(Ready About May 10th)

**EARLIANA**—Early, good size and quite smooth. A very fine tomato for market; scarlet red color. An excellent early tomato for home use. **PRICES: dozen, 25c; 100, \$1.00; 500, \$4.00; postpaid; 1000, \$6.00, by express collect. Transplanted Plants: 40c per dozen; \$2.50 per 100, postpaid; 1000, \$20.00, sent as directed, charges collect.**

**MARGLOBE**—The Great New Tomato introduced by the U. S. Department of Agriculture through the efforts of Dr. Fred J. Pritchard, of the Bureau of Plant Industry is the last word in Tomatoes.

Never before has a hybrid of such great promise been brought to our notice. Its spreading habits of growth enable it to bear large, perfect globe-shaped fruit in great abundance. In color it is a most beautiful scarlet, ripening well up to the stem. Its eating qualities, likewise, are very much superior to most of the common varieties.

Hot Bed plants ready May 10th or 15th as follows: **Dozen 30c; 100, \$1.50; 500, \$6.00 sent postpaid; \$10.00 per 1000 collect, sent as directed.**

Extra Heavy Transplanted (spotted) plants as follows: **Dozen 65c; 100, \$3.25; 500, \$15.00 postpaid; \$28.00 per 1000 collect sent as directed.**

## CABBAGE PLANTS

(Ready About April 12th)

**JERSEY WAKEFIELD.** It is a very solid early cabbage and it has a very few outer leaves. Can be set very early. It will mature nice, large head in 75 to 80 days. **PRICES: 25, 30c; 100, 85c; 500, \$2.50 postpaid; \$4.00 per 1000 collect, sent as directed.**

**COPENHAGEN MARKET.** A fine, large, early, round-head cabbage. It will stand a long time without bursting and easy to grow to 10 pounds. Short stem, heads almost on the ground and can be set closer than other varieties. They should be set out in every garden. Try them. **PRICES: 25, 40c; 100, \$1.00; 500 \$3.00, postpaid; \$5.00 per 1000 collect, sent as directed.**

## EGG PLANT PLANTS

**NEW YORK IMPROVED LARGE PURPLE**—Fruit large, fine and free from thorns. Matures in 130 days. Skin rich purple, flesh white and of good flavor. We can highly recommend our carefully selected strain of this egg plant to everyone. **PRICES: Same as Black Beauty. Transplanted plants only.**

**BLACK BEAUTY**—Is very early, in fact the earliest of good market variety. It grows a good size fruit for market. Average weight, two to three pounds. Bears its fruit close to main stem. **PRICE: Dozen 50c; 100, \$3.00 postpaid. Spotted or transplanted plants. (Ready about May 25th).**

# DAHLIAS

**SPECIAL INTRODUCTORY OFFER:**.. One each of the six varieties listed on opposite page will be sent you postpaid for **\$3.50**. Regular value \$4.75.



JANE HALL

## READ THIS SPECIAL OFFER

Place your order of Nursery Stock with us on or before April 1st, 1932, and with every order amounting to \$3.50 or over we will include (if mentioned in your order) 1 root of our Jersey's Beauty Dahlia pictured back outside cover.

With an order amounting to \$5.00 or over will include one of our **JANE COWL** described on opposite page absolutely free for the asking.

From APRIL 2nd to MAY 25th, 1932

We will include absolutely free to you with every order amounting to \$5.00 and over one of our Jersey's Beauty Dahlia pictured back outside cover or one of our Jane Hall pictured above.

Or, with an order of \$7.50 and over we will include without extra cost to you one each of our Jersey's Beauty and Jane Hall or 1 **JANE COWL**. Order must bear postmark of not later date than above date.

(These offers do not apply on Special Collections or quantity quotations)

We take great pride and it gives us much pleasure in being able to offer our many friends and customers a select line of the most popular and best varieties of Dahlias known. All stock listed below is Guaranteed True to name and all orders will be filled with strong **Field-grown** root divisions. Which means all the health and vitality a well grown root should have, regardless of cost of production. Are introducing only the worthwhile varieties of the bright and pleasing shades and colors. We will notify you, if unable to supply any variety. We do not substitute. To avoid disappointment we advise ordering early.

**JERSEY'S BEAUTY** (Pictured outside back cover) Its exquisite color, a vivid glowing pink, together with its large flowers of great depth always full to the center is reason enough for this Dahlia holding the popular position it now has among lovers of a Formal Decorative flower. An ideal pink for exhibition or florist use. Blooming early with exceptional keeping and carrying qualities. Good roots, guaranteed to bloom this year. **50c each; \$5.00 per dozen Postpaid.**

**JANE COWL** By far a leader of the Informal Decorative type. A warm buff and old gold, blending to apricot and rose at the center have made this wonderful dahlia a success wherever grown. Your friends and neighbors will marvel at the ideal growth of the bush with strong stems holding the large impressive flowers upright. Our Guaranteed roots will please you. **PRICE \$1.00 each; \$10.00 per dozen. Postpaid.**

**IDA PERKINS** (Perfect White Bloom) For those desiring something really beautiful with fine form and full centers, on a strong and erect stem. It blooms early and continues until frost. The foliage is a dark leathery green which adds much to its beauty. **Roots \$1.50 ea.**

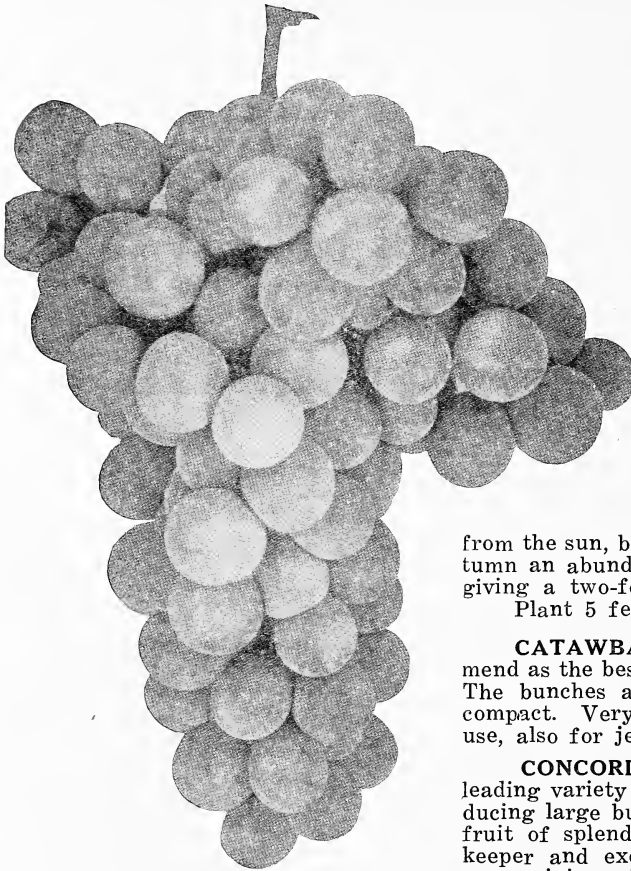
**AVALON** A pure canary yellow. Will do well on any ordinary soil requiring little attention. Is a heavy producer of both flowers and roots. Thinning out and disbudding is advisable shortly after topping. **PRICE 50c each; \$5.00 per dozen. Postage paid by us.**

**JANE HALL** (Pictured opposite page) Comes highly recommended for keeping qualities when cut. Blooms well above the foliage on stout stems. Color, buff yellow with bronzy suffusion. A very much liked dahlias. **PRICE each 50c; per dozen \$5.00 Postage paid.**

**EMMA MARIE** Pink and white. An unsurpassed color combination. Clear pink with a creamy white center, making this one the prettiest color combinations known for a Semi-Cactus Dahlia that is wanted for either exhibition or commercial purposes. A dahlia that is decidedly distinctive. **Roots 75c each or \$6.00 per dozen, Postpaid to your address.**

#### POMPON DAHLIAS

**YELLOW GEM:** A clear canary yellow of fine form **35c**  
**BRONZE BEAUTY** Beautiful golden apricot. A free bloomer **25c**  
**SNOWCLAD** One of the best all-around **pure white** blooming early **25c**  
**SPECIAL OFFER**—One each of the 3 listed above sent postpaid upon receipt of **60c.** (Other Dahlia Collections page 15.)



Standard Varieties of

## Grapes

The Pick of the Choicest!

The grape is one of the easiest of cultivation, growing almost anywhere and requiring very little attention. They can be grown on a trellis or the vines trailed along a fence, and they are also grown for shade for the back porch or summer house, not only giving protection

from the sun, but producing in autumn an abundance of fruit, thus giving a two-fold return.

Plant 5 feet apart.

**CATAWBA**—This we recommend as the best of all red grapes. The bunches are large and very compact. Very good for the table use, also for jelly or wine.

**CONCORD (Black)**—The leading variety for home use, producing large bunches of big black fruit of splendid flavor. A good keeper and excellent for making grape juice. By far the most popular grape on the market.

**NIAGARA (White)**—The standard white grape. Both bunch and berries are large handsome and well formed. The flesh is firm and juicy, while the flavor is of the best. A splendid variety in every way, and should be in every collection.

PRICES: (Postpaid, 100 or less)

|                            | each | 6      | 12     | 50     | 100     | 1000    |
|----------------------------|------|--------|--------|--------|---------|---------|
| Concord, 1 yr.             | 18c  | \$ .65 | \$1.10 | \$3.35 | \$ 5.45 | \$25.00 |
| Concord, 2 yr. medium      | 23   | .85    | 1.45   | 3.90   | 5.95    | 39.00   |
| Concord, 3 yr. Extra heavy | 38   | 1.80   | 3.15   | 9.80   | 14.75   |         |
| Catawba, 2 yr. No. 1       | 27   | 1.35   | 1.95   | 5.45   | 9.25    | 43.00   |
| Niagara, 2 yr. No. 1       | 25   | 1.25   | 1.85   | 4.85   | 7.85    | 40.00   |

## Look These Specials Over Before Sending Order

### Collection No. 1

|                                |                             |
|--------------------------------|-----------------------------|
| 12 St Regis red Rasp. plants   | .60                         |
| 12 Eldorado, Blackberry plants | .60                         |
| 12 Cumberland, Black Rasp.     | .65                         |
| 12 Lucretia, Dewberry plants   | .45                         |
| Value                          | \$2.30                      |
| Special Price                  | <b>\$1.50</b> on lot No. 1. |

### Collection No. 2

|                                |                |
|--------------------------------|----------------|
| 12 Cuthbert, red Rasp., plants | .55            |
| 12 Russell, Blackberry plant   | .65            |
| 12 Concord Grape vines 2 yr.   | 1.45           |
| 25 Mastodon Strawberry         | .75            |
| 12 Rhubarb roots, 2 yr. No. 1  | .85            |
| Value                          | \$4.45         |
| A Real Buy at                  | <b>\$3.50.</b> |

### Collection No. 3

|                              |               |
|------------------------------|---------------|
| 6 Niagara, wht Grape, 2 yr.  | \$1.25        |
| 6 Concord, 2 yr. No.         | .85           |
| 25 MASTODON, Strawberry      | .75           |
| 12 Russell Blackberry plants | .85           |
| 12 Horseradish roots         | .45           |
| Value                        | \$4.15        |
| Will be sent Postpaid for    | <b>\$3.25</b> |

### Collection No. 4

|                              |                |
|------------------------------|----------------|
| 12 Russell Blackberry plants | .85            |
| 50 St. Regis, red Raspberry  | 1.55           |
| 50 LATHAM Best red           | 2.25           |
| 24 Rhubarb, No. 1 roots      | 1.70           |
| 50 MASTODON Strawberry       | 1.25           |
| Value                        | \$7.60         |
| A First-class garden for     | <b>\$5.50.</b> |

### Collection No. 6

|                             |                |
|-----------------------------|----------------|
| Excellent for Small Garden. |                |
| 12 Rhubarb, 2 yr. No. 1     | .85            |
| 6 Concord Grape, 2 yr.      | .85            |
| 6 Niagara                   | 1.25           |
| 50 MASTODON Strawberry      | 1.25           |
| Value                       | \$4.20         |
| Sent Postpaid for           | <b>\$3.25.</b> |

### Collection No. 7

|                              |                |
|------------------------------|----------------|
| 50 MASTODON Strawberry       | 1.25           |
| 50 Premier, early strawberry | .65            |
| 12 LATHAM leading Rasp.      | .95            |
| 12 Eldorado, Blackgerry      | .60            |
| 12 Rhubarb, 2 yr. No. 1      | .85            |
| Value                        | \$4.30         |
| Sent Postpaid for            | <b>\$3.00.</b> |

### Collection No. 8

|                            |                |
|----------------------------|----------------|
| 12 Rhubarb, 2 yr. No. 1    | .85            |
| 50 Mary Washington, 2 yr.  | .85            |
| 50 MASTODON Strawberry     | 1.25           |
| 12 Concord Grape, 2 yr.    | 1.45           |
| 6 Niagara Grape, 2 yr.     | 1.25           |
| 12 Horseradish roots       | .45            |
| 12 Best of All, Blackberry | .85            |
| 2 Jersey's Beauty Dahlia   | 1.00           |
| 1 Jane Cowl Dahlia         | 1.00           |
| Value                      | \$8.95         |
| Sent Postpaid for          | <b>\$7.25.</b> |

No Extra Discounts given on any Collections listed on this page.

### Collection No. 5

|  |        |
|--|--------|
| 50 Mary Washington Asparagus roots 2 year old No. 1  | \$ .85 |
| 12 Lucretia Dewberry tips plants                     | .45    |
| 12 Alfred Blackberry plants (No. 1 suckers)          | .70    |
| 12 Latham Raspberry plants (leading variety)         | .95    |
| 12 Cumberland, Black Raspberry                       | .65    |
| 100 Premier, Best early Strawberry                   | .95    |
| 50 MASTODON, World's greatest everbearing Strawberry | 1.25   |
| 12 Victoria Rhubarb, No. 1 roots, 2 year old         | .85    |

Total Value **\$6.65**

Will be sent Postpaid upon receipt of **\$5.00.**  
(Other collections are listed on page 15.)

# L. & F. DONDERO

Vineland, N. J., .....

For amount enclosed \$ ..... send by .....  
 Mail, Express or Freight

To .....  
 Write Full Name Plainly

Street and No. .... R. F. D. No. ....

Post Office ..... State .....

Express or Freight Office .....

About Date Wanted .....

The following listed stock to be absolutely Free from disease. True to name and Satisfy me or my money to be returned.

| QUANTITY              | VARIETY | PRICE |
|-----------------------|---------|-------|
| Total Amount of Order |         | _____ |
| Amt. Sent             |         | _____ |
| Bal.                  |         | _____ |



# RHUBARB

**GENUINE VICTORIA** rhubarb grown by Dondero in our own field, especially adopted to the growing of fine roots.

A money making crop that comes early in the Spring (even before strawberries) when we all can use a few dollars to good advantage. A crop that you have sure sale for in the market or on Road side stands.

The **VICTORIA** is the only variety grown by us and the best variety known, producing large and tender stalks that are just the thing for pies or canning or fresh table sauce. Yields abundantly and much earlier than the old common sorts. Just the money maker you want to plant in the idle acres you have. Rhubarb requires very little attention and is planted like asparagus.

Plant in trenches 4 feet apart laying roots 2 feet apart and cover with good top-soil. Planted this way it takes about 5500 plants per acre. Two dozen or 50 is enough for the average family.

Prices bottom of page.

Good, strong, healthy 2 year old roots

| PRICES                  | 12  | 50     | 100    | 1000    |
|-------------------------|-----|--------|--------|---------|
| Victoria Rhubarb        | 85c | \$2.50 | \$3.50 | \$24.00 |
| Victoria No. 2, Rhubarb | 50  | 1.50   | 2.50   | 14.00   |

Less than 300 sent postpaid; 300 or more at 1000 rate, collect, as directed.

A **SPECIAL GUARANTEE OFFER**. Place your order with us for No. 1 Victoria Rhubarb roots. We will send them postpaid in lots up to 300. When you receive these roots inspect them carefully and if they are not the nicest, cleanest and best Rhubarb roots you ever purchased, let us know and we will cheerfully refund your money. How is that?

# Horseradish Roots

**MALINER KREN** Of very strong growth. A new variety that makes an enormous yield and is so early that it may be marketed before the common kind is ready. Cuttings planted in April will produce fine large radish for grating the first of October. If left in ground until Spring, grows to great size and produces as much as four tons to the acre. It is as white as snow when dressed. Entirely free from all diseases and grows on practically all soils. Plant with largest end up covering over about 1 inch with top-soil, in rows 4 feet apart and roots to be about 18 to 24 inches apart in the row. You will have no trouble growing a good crop with our roots. We guarantee.

| PRICES                             | 12  | 50  | 100    | 1000   |
|------------------------------------|-----|-----|--------|--------|
| Horseradish Roots, 6 inch cuttings | 35c | 75c | \$1.25 | \$8.00 |

These Prices include postage.

# DAHLIAS

FREE (See page 18)



Decorative Dahlia

JERSEYS BEAUTY

Full description of the above and other varieties of Dahlias  
will be found on pages 18-19

## VINELAND PLANT FARMS

L. & F. DONDERO, Prop.

Delsea Drive

VINELAND, NEW JERSEY

On State Highway Route 47. Two miles north of Vineland Circle.